

User Manual ELM - RPE Widget

DAIMLER

Table of Contents

RPE Widget.....	3
1 Configuring RPE Widget	4
2 Report Generation via RPE Widget	6
3 Generate Application Specific Password	10

DAIMLER

RPE Widget

RPE Widget is used to automate the process of report generation using RPENG.

The following manual helps you to configure RPE Widget and how to generate a Report using RPE Widget

Requirements

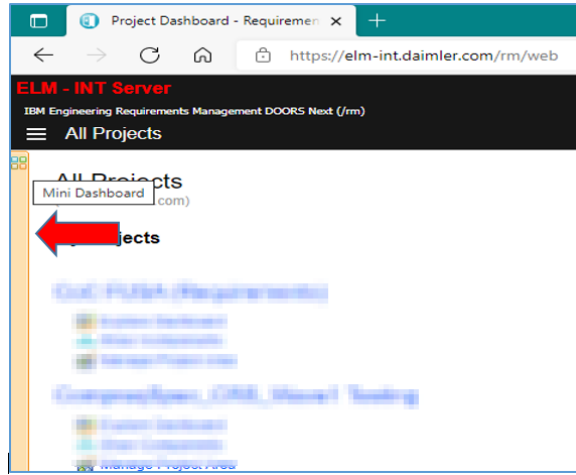
Access to ELM Platform and should have access to DNG Project Area for which you are going to generate Report.

You should generate App Specific Password for each Environment. Please [Click here](#) for the steps to generate App Specific Password.

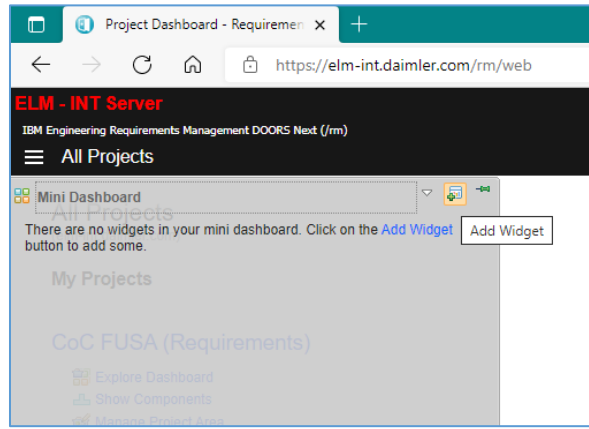
DAIMLER

1 Configuring RPE Widget

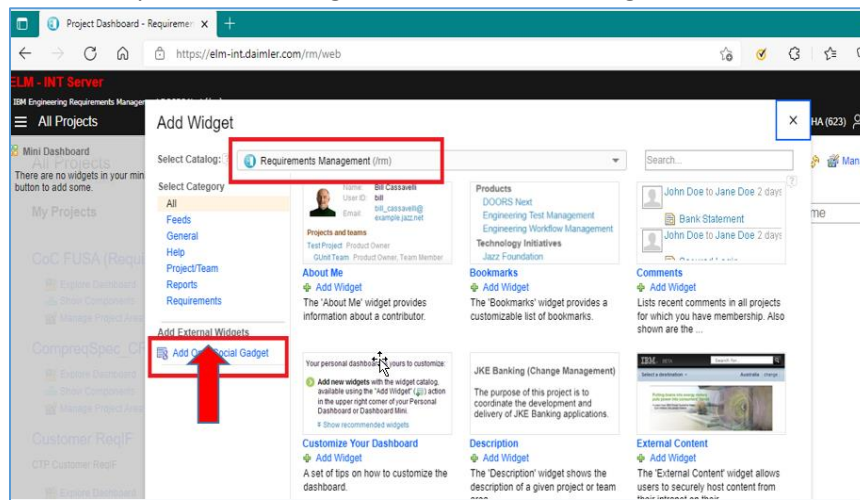
- Login to <https://elm.daimler.com/rm/web>
- Click on Mini Dashboard as shown below



- Click On "Add widget" as shown below

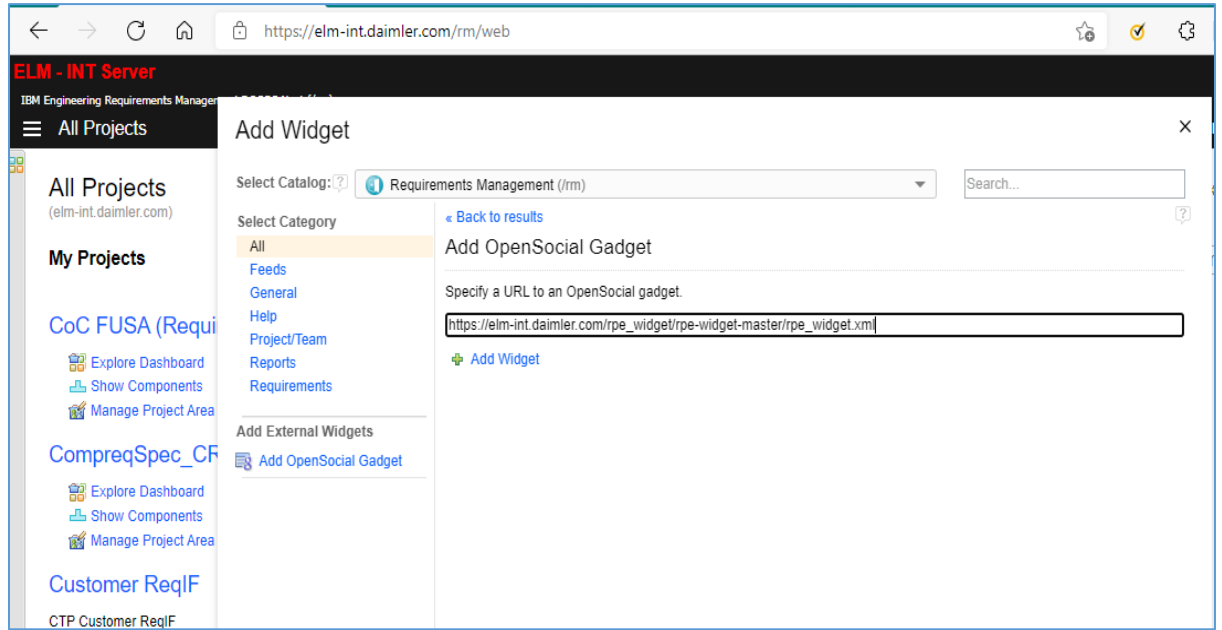


- Select "Requirement Management" from the catalog and click on "Add OpenSocial Gadget"

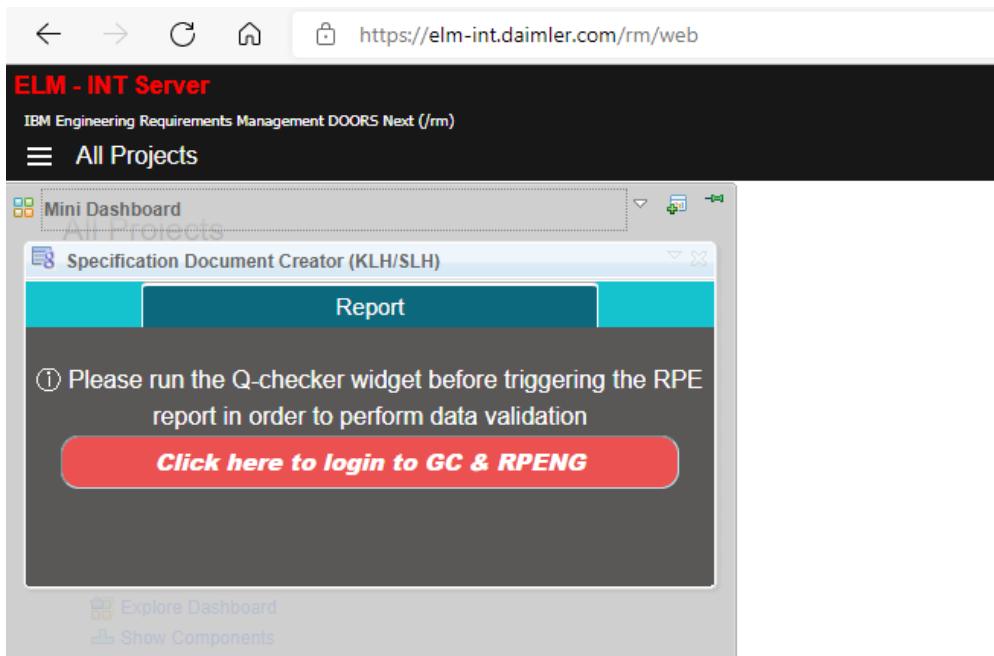


DAIMLER

- Enter the below url of configuration file and click on “Add Widget”. If you are using PROD, please use PROD URL.
 - INT: https://elm-int.daimler.com/rpe_widget/rpe-widget-master/rpe_widget.xml
 - PROD: https://elm.daimler.com/rpe_widget/rpe-widget-master/rpe_widget.xml



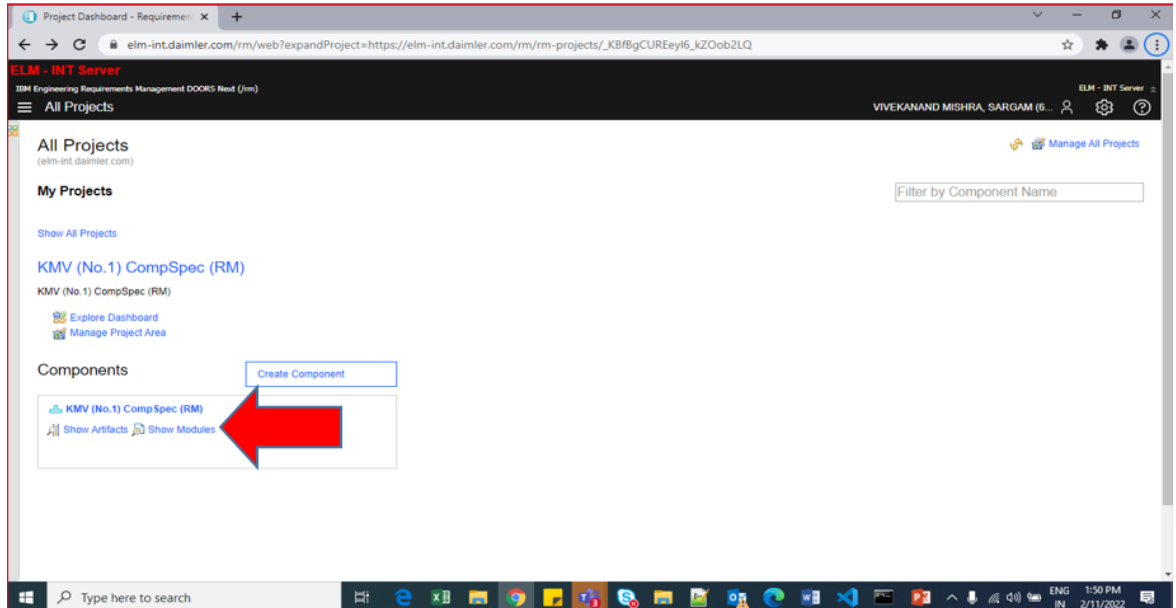
- Close the pop-up window and click on the mini dashboard icon to view the configured RPE widget.



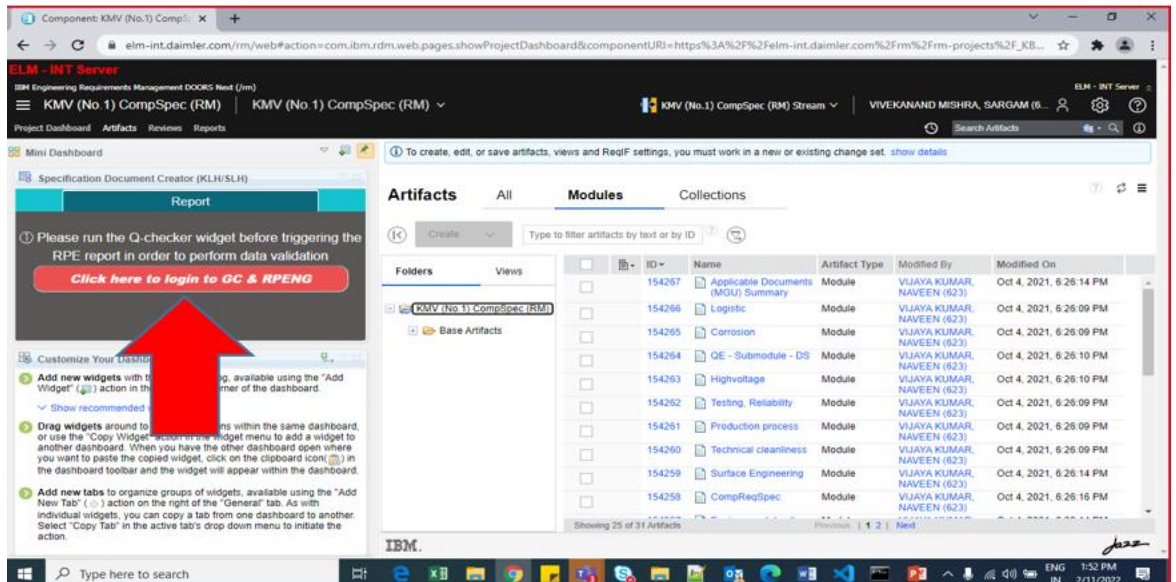
DAIMLER

2 Report Generation via RPE Widget

- Login to <https://elm.daimler.com/rm/web>
- Select the required Project Area and click on “Show Modules”.

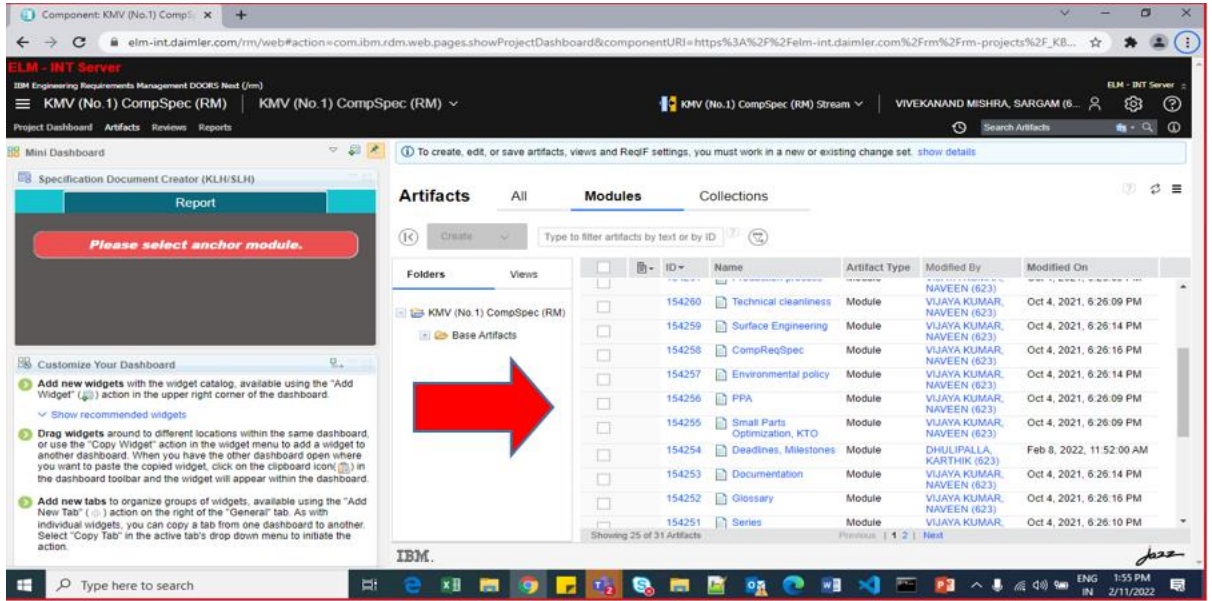


- Open the RPE Widget from mini-dashboard and click on Login to GC and RPENG as shown below

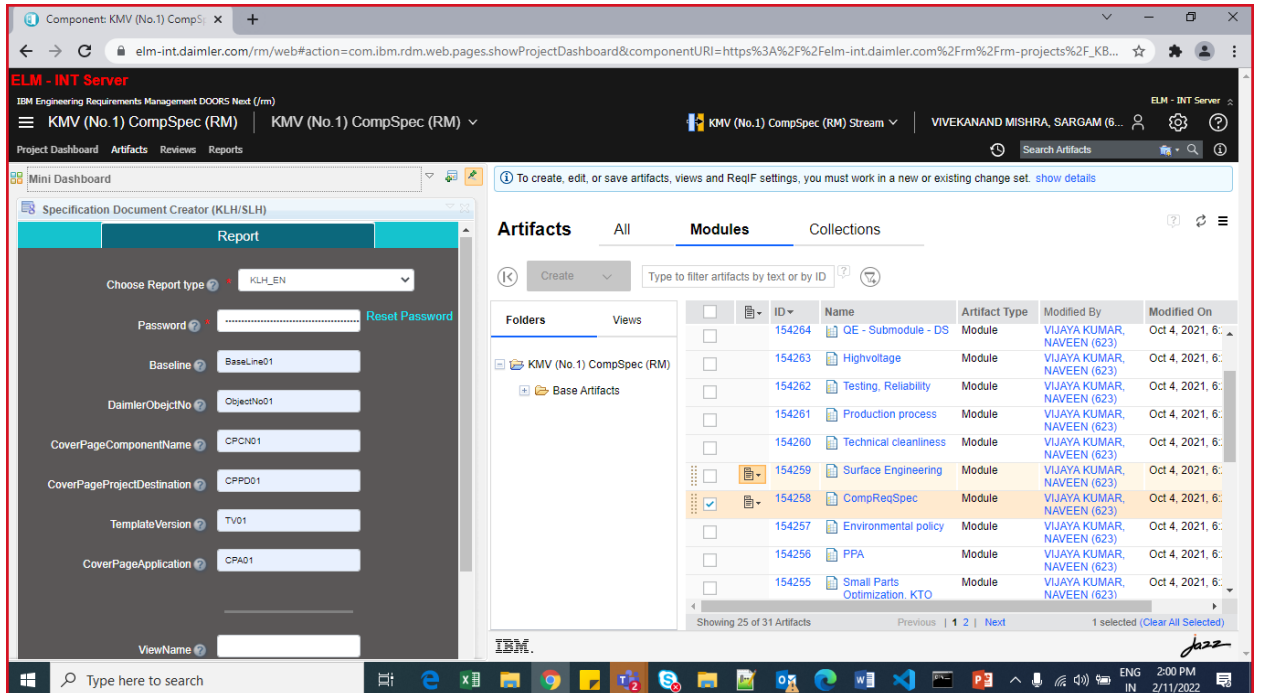


DAIMLER

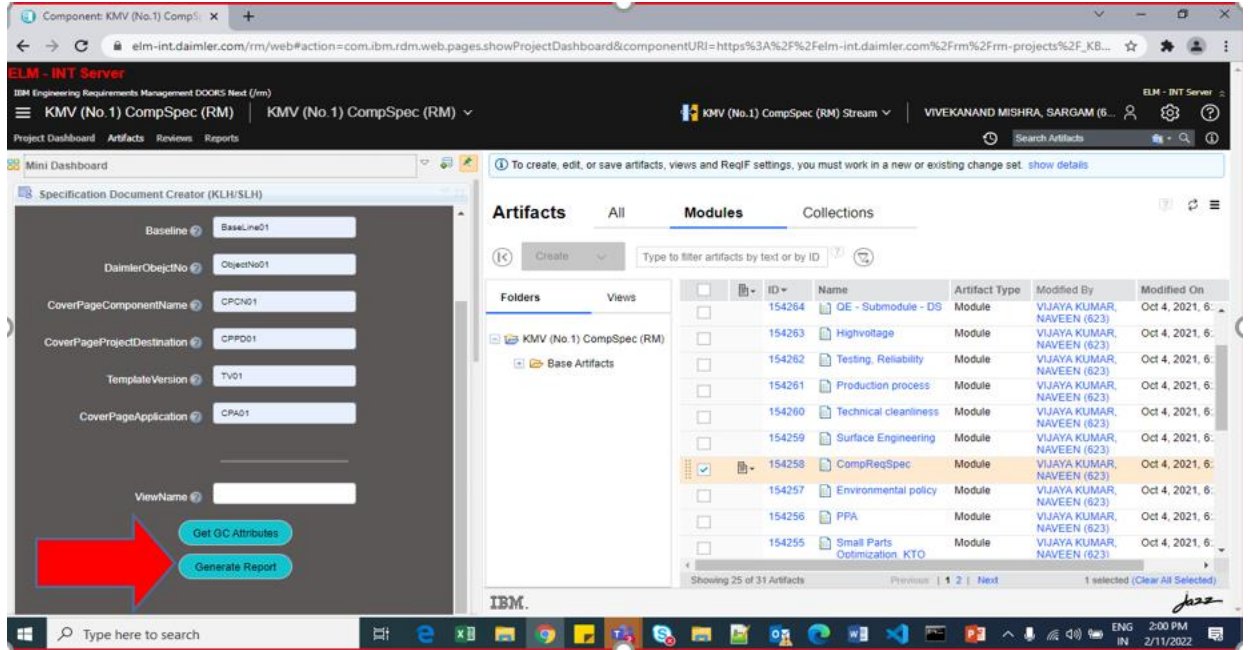
- Select any anchor module by clicking on checkbox from list of modules (Ex : CompReqSpec)



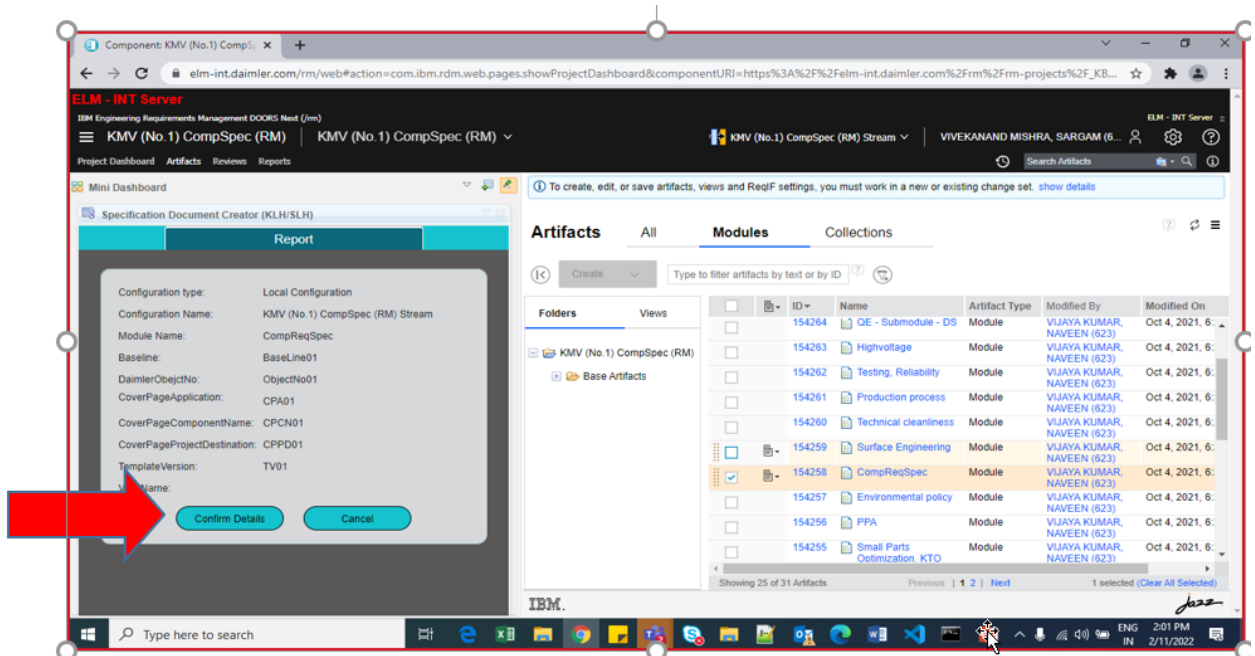
- After selecting any anchor module, choose the required report type as shown below and fill the other details.
(Note : Please ensure to put the application specific password .Please [click here](#) for the steps to generate App Specific Password.)



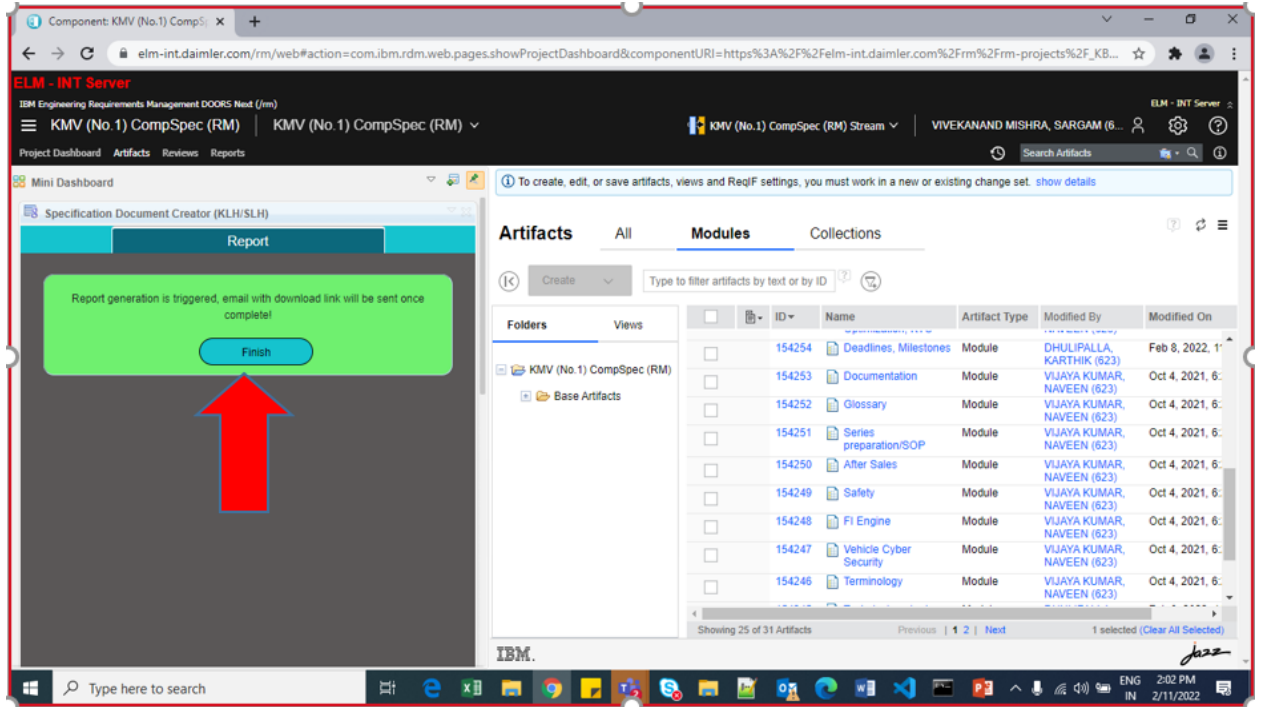
- Provide all the necessary details and click on “Generate Report”.



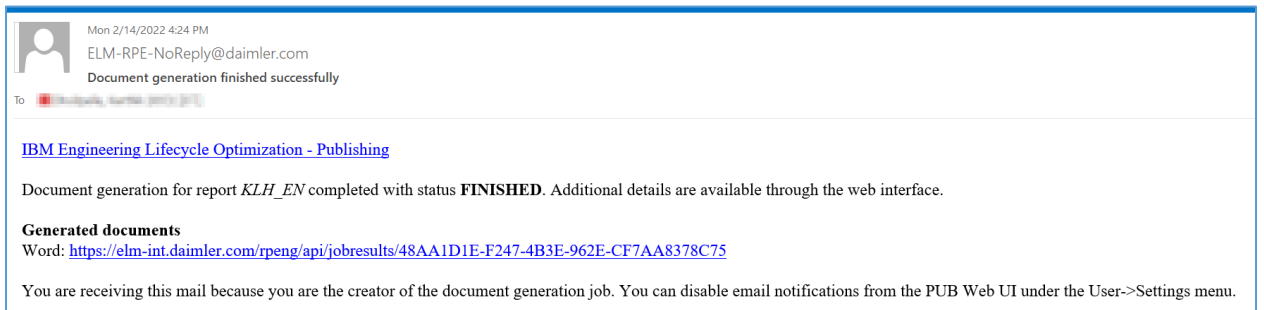
- Validate the provided information and click on confirm details.



- After confirming the details, report generation will start in RPENG.



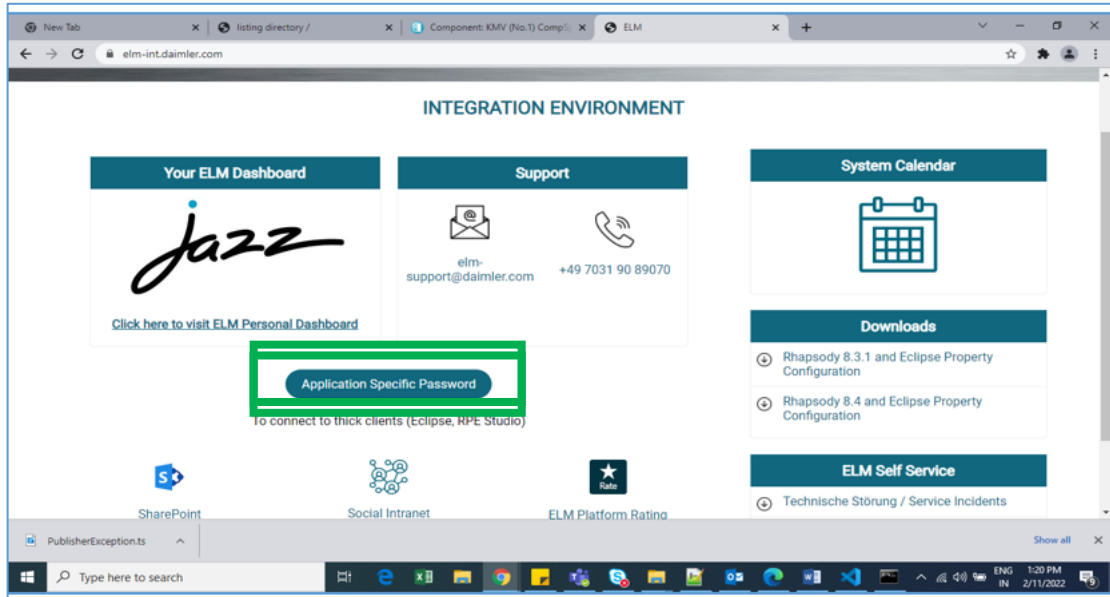
- Once the report gets generated successfully a mail will be triggered to respective user to download it.



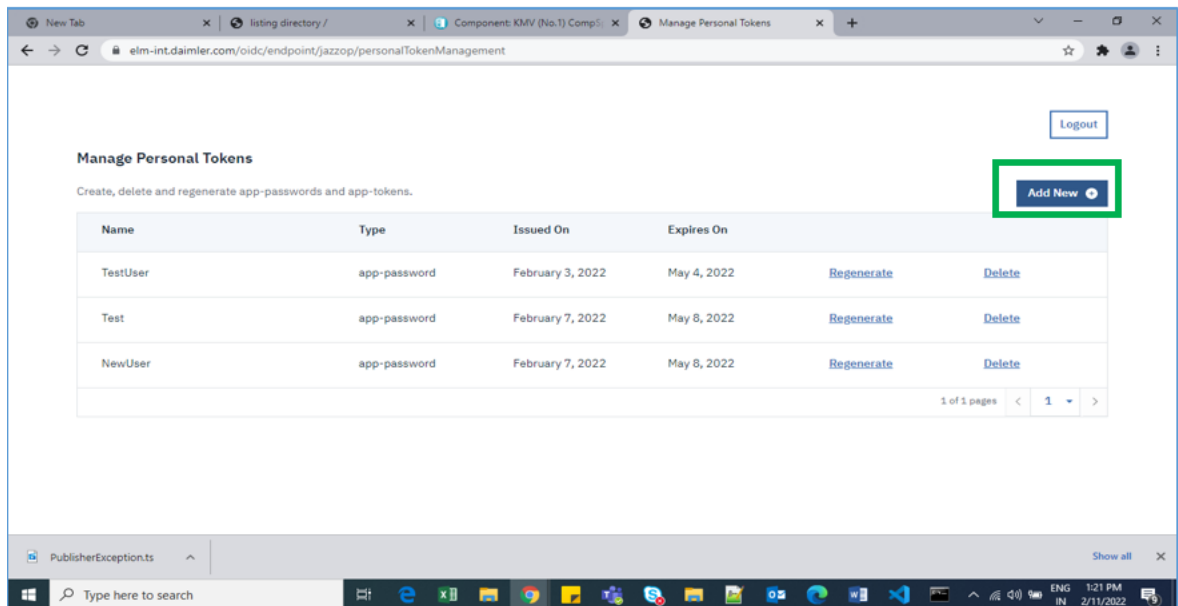
DAIMLER

3 Generate Application Specific Password

- Open New Tab in Browser
- Go to <https://elm.daimler.com> and click on "Application Specific Password"



- Click on add new button as shown below:



DAIMLER

- Provide any name and click on generate, the password gets generated.
- Copy the generated password and save it for future use.

